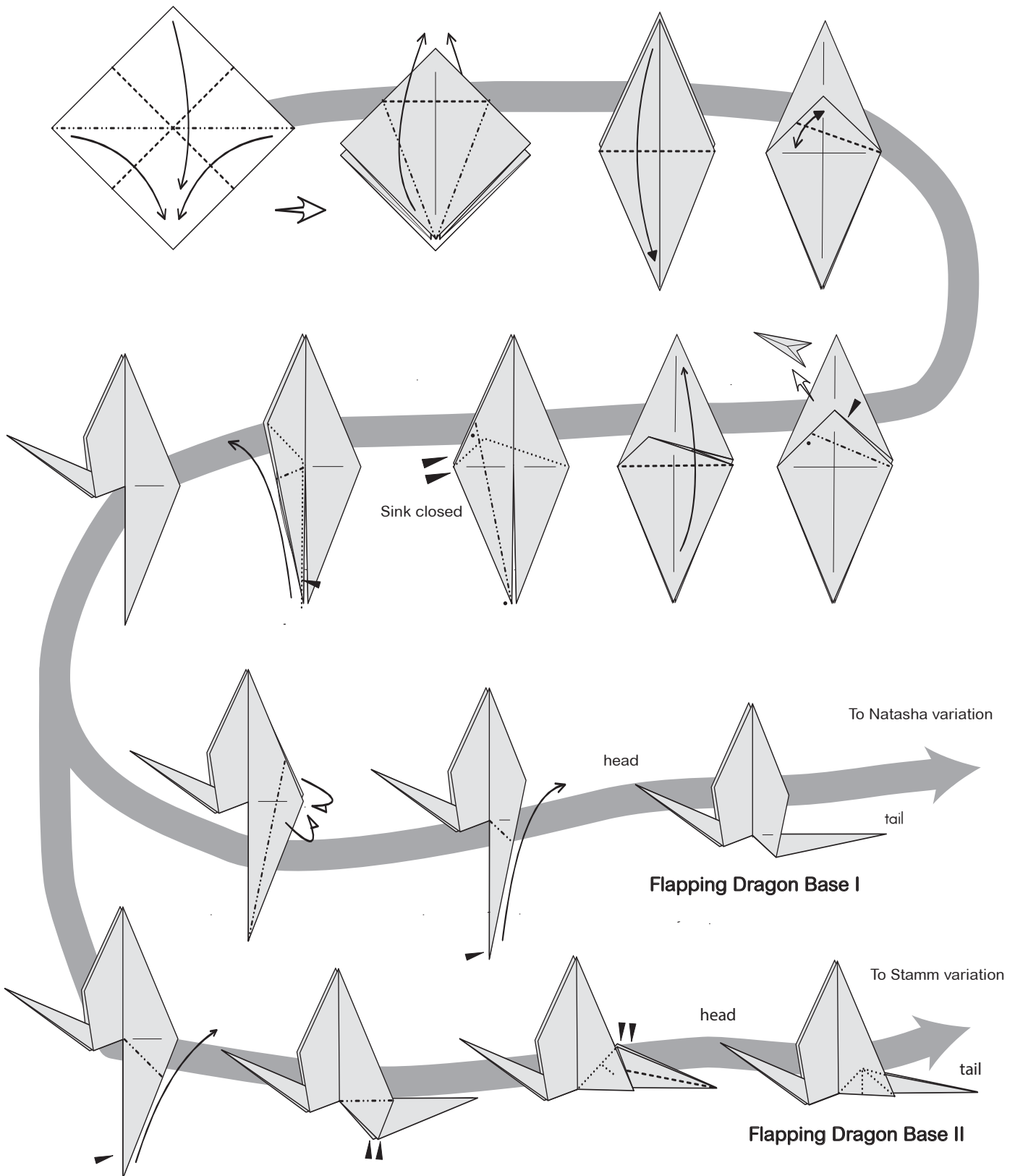


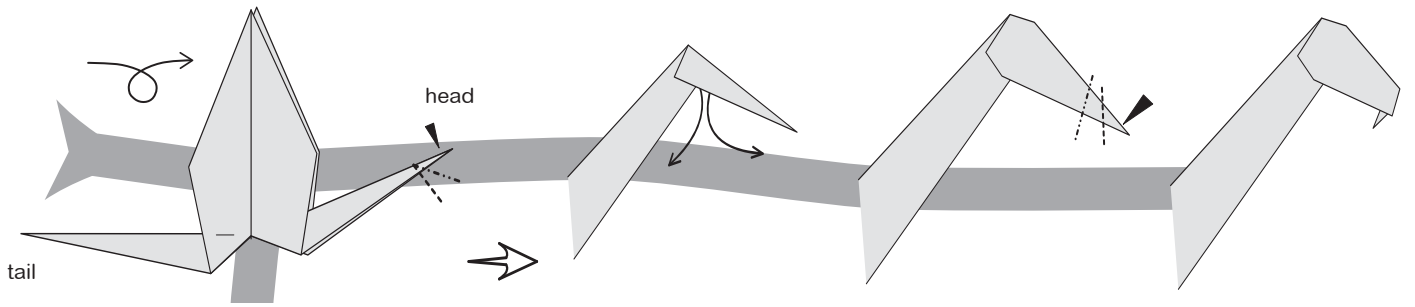
Flapping Natasha / JulieAnn's Dragon

J.C. Nolan
2014 - Sunnyvale, CA
Diagrams ©2014 JC Nolan

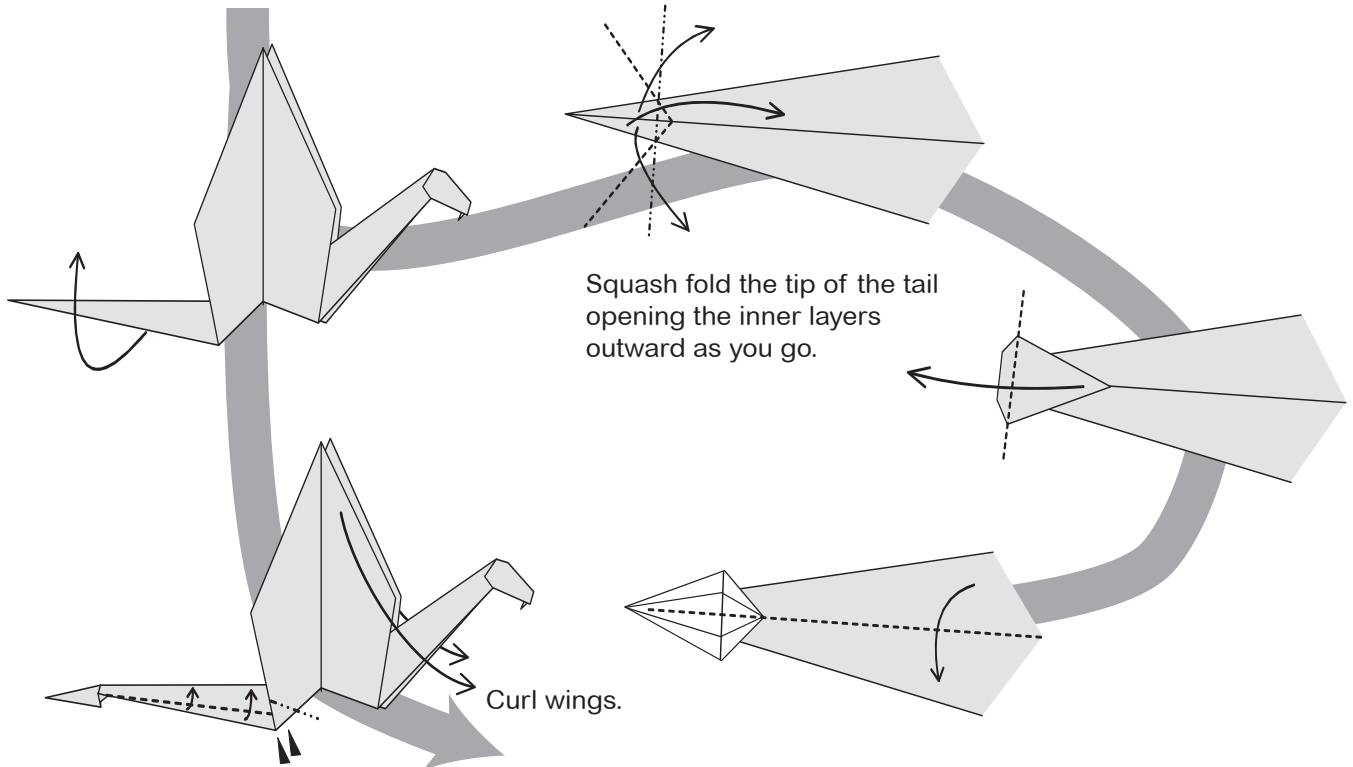
Hi-Intermediate



Flapping Natasha (Variation I)

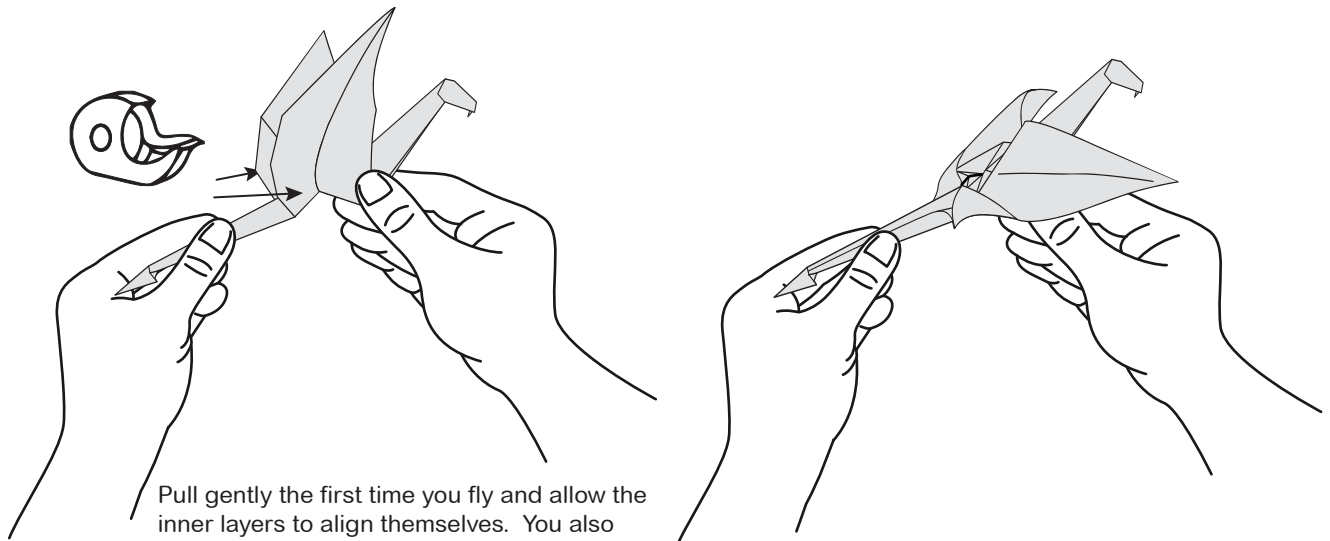


Start with Flapping Dragon base I, head pointing right, tail to the left.



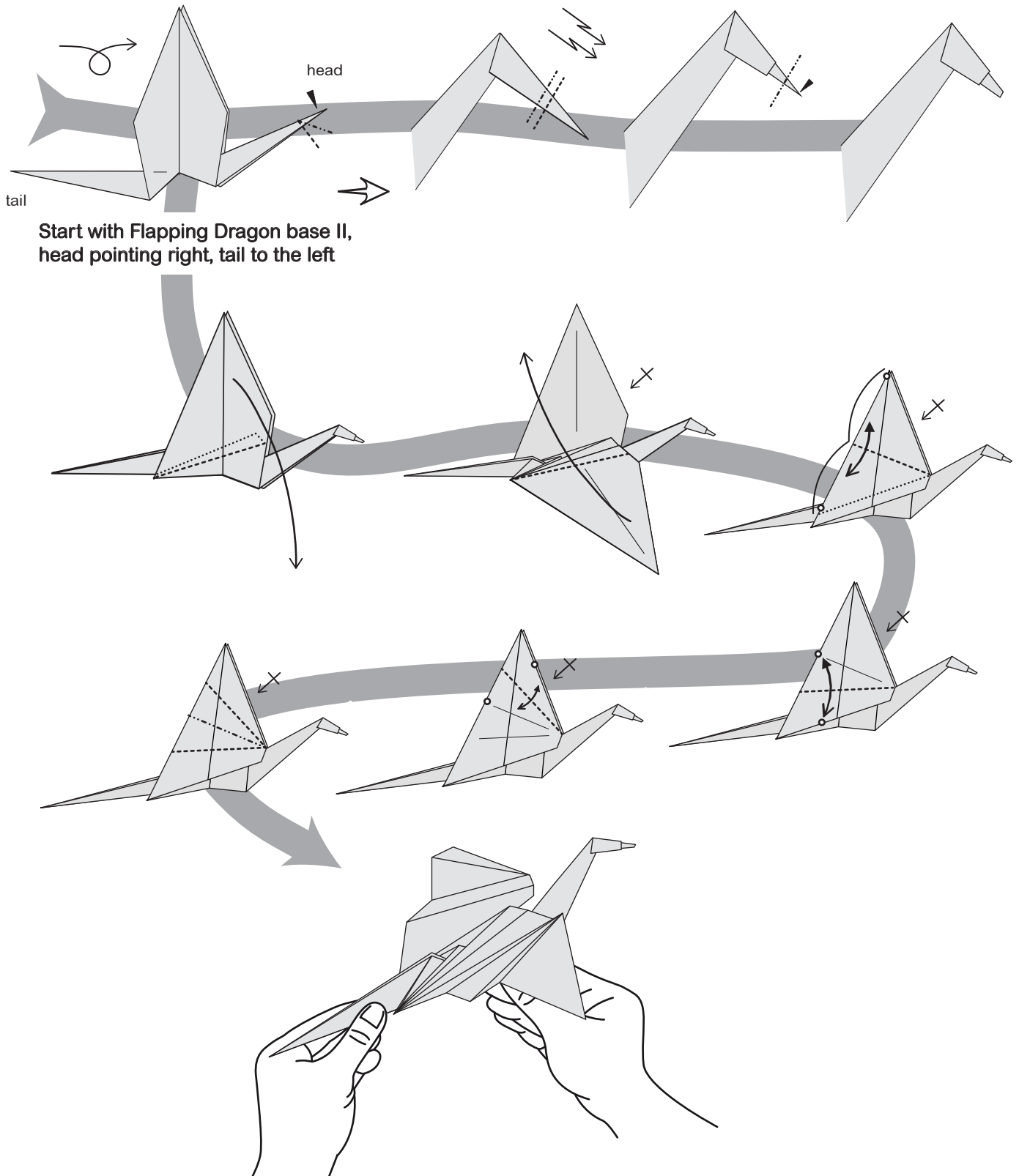
Squash fold the tip of the tail opening the inner layers outward as you go.

Curl wings.



Pull gently the first time you fly and allow the inner layers to align themselves. You also can add a little tape to make it "child proof" and it will last for quite a long time.

JulieAnn's Dragon (Variation II)



I include this variation because JulieAnn preferred the wing design... and I because I found the internal structure to be simply beautiful. The folder is invited to mix and match as they like or take either of the two bases as jumping off points to create something completely new. There are lots of possibilities to explore... Many thanks to Tom Stamm and his beautiful dragons which were the original inspiration for me to explore these action model versions of the original work.